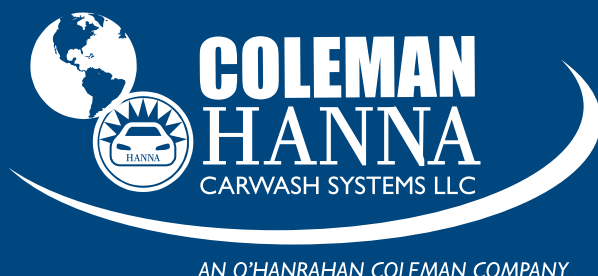




Innovative Car Wash Systems

Perfect for Auto Dealers to Decrease Labor Costs and Increase Sales



5842 W 34th St, Houston, TX 77092
1.800.999.9878 • 1.713.683.9878
www.colemanhanna.com



Find us on Facebook:
[/ColemanHannaCarwash](https://www.facebook.com/ColemanHannaCarwash)

Table of Contents

Conveyorized Tunnels

In Bay Tunnel 2

Drive Thru Tunnels

Fleet Wash Systems 3

In Bay Automatics

Water Wizard FasTrak 8

Water Wizard 2.0 9

FusionX 10

eFusion 11

Self Serve Systems

iShine Spot Free Rinse Portable System 13

Splash N Dash 14

Support Equipment

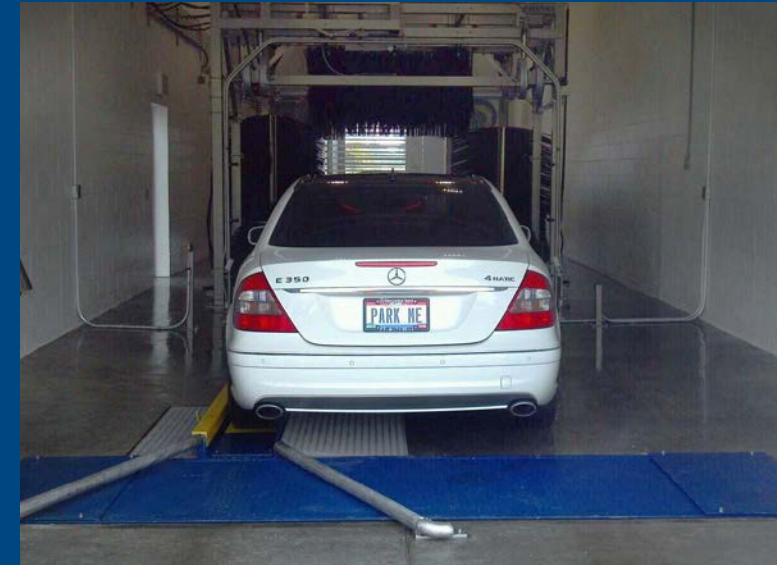
Vacuums 15

Sweetwater Spot Free Reverse Osmosis System 16

Sweetwater Reclaim System 17

For more detailed information such as technical specs, pricing, and site drawings, please contact Coleman Hanna or your local Coleman Hanna distributor.

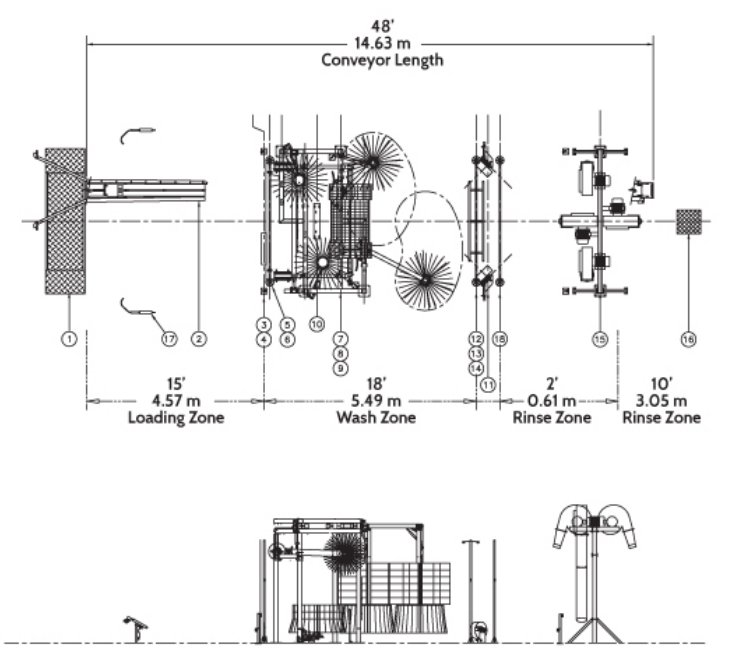
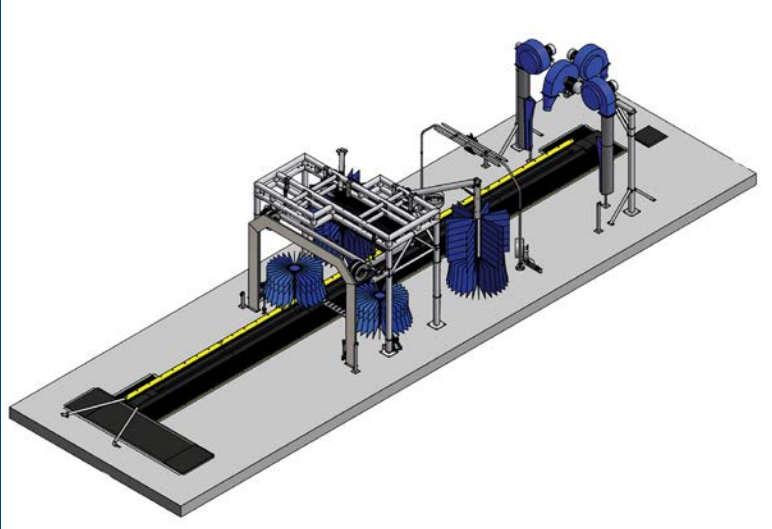
Conveyorized Tunnels



No other car wash manufacturer beats the decades of experience Hanna has to offer, which is why the industry so often turns to us to develop innovative new car wash systems. Hanna's years of experience is combined with its team of world-class engineers and designers to provide the most advanced and effective systems available. We offer a wide variety of lengths of tunnels from the 28' In Bay Tunnel and up to a 300' conveyorized tunnel. Over 120 auto manufacturer installations throughout the world rely on Coleman Hanna Carwash Systems to wash their cars: *BMW, Mercedes, Chrysler, Lexus, Nissan, General Motors, Ford, Toyota, Audi, and many more.* Our innovative tunnel technology is trusted by auto manufacturers which makes it a perfect fit for auto dealers.

In Bay Tunnel

Drive Thru Systems



Components:

1. Correlator
2. Conveyor
3. Entry Eyes
4. Wheel Detector
5. Graphics Arch
6. Tire & Wheel CTA
7. Stack-N-Scrub
8. Top Brush
9. 28" Hub Cap Rocker Panel
10. Undercarriage
11. HydraBlast
12. Final Rinse Versa Arch
13. Rain Header
14. Rain Header
15. Air Dryers
16. Collision Avoidance
17. Optional Prep Unit
18. Optional Spot-Free Versa Arch



Coleman Hanna's Fleet Wash Systems provide exceptional cleaning performance while decreasing the amount of labor required to keep clean cars on the lot. The Fleet Wash Systems operate as drive thru systems and are composed of the highest cleaning power for the short amount of required tunnel space. Operate your own high quality tunnel with as little space as 24'. Need more cleaning power for a larger lot? Consider our longer models 45' or 56' with optional conveyor to maximize the cars washed per hour. More cars cleaned per

hour means less labor and more time for the cars to be on the lot. Coleman Hanna has experience for over 40 years in tunnel systems and has installations in hundreds of auto manufacturers and dealers worldwide. In fact, before a buyer takes delivery of a car, odds are Hanna has washed it twice — once at the factory and again before delivery.

Provide clean, dry and shiny vehicles to help portray a better image to potential customers and sell more vehicles!

Fleet Wash 24'

The 24' Fleet Wash System

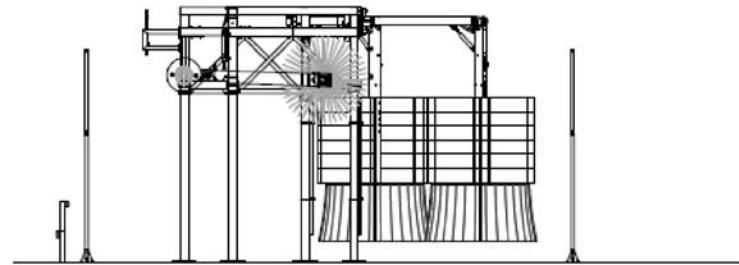
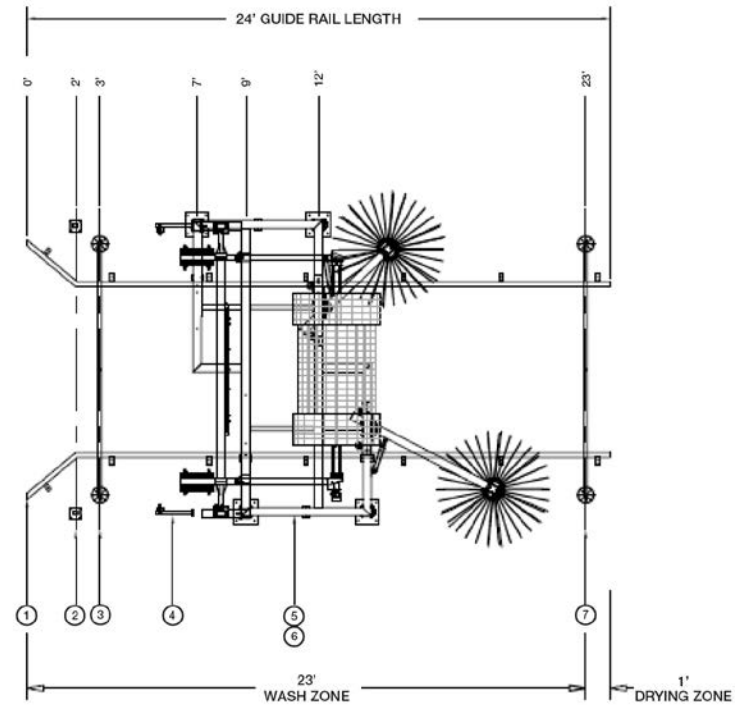
provides the ultimate space conscious wash. This system includes the powerful top brush and flex wraps to clean off stuck on dirt while being gentle on the vehicle. Because of the short required space, this system does not include drying equipment. Short tunnel space means short wash for each vehicle and more cars washed per hour.

Tunnel Components:

1. 24' Guide Rails
2. Entry Eyes
3. Pre-Soak Arch
4. Pre-Soap Foam Application
5. Flex Wrap Around Washers
6. Top Washer
7. Final Rinse Arch

Technical Specifications:

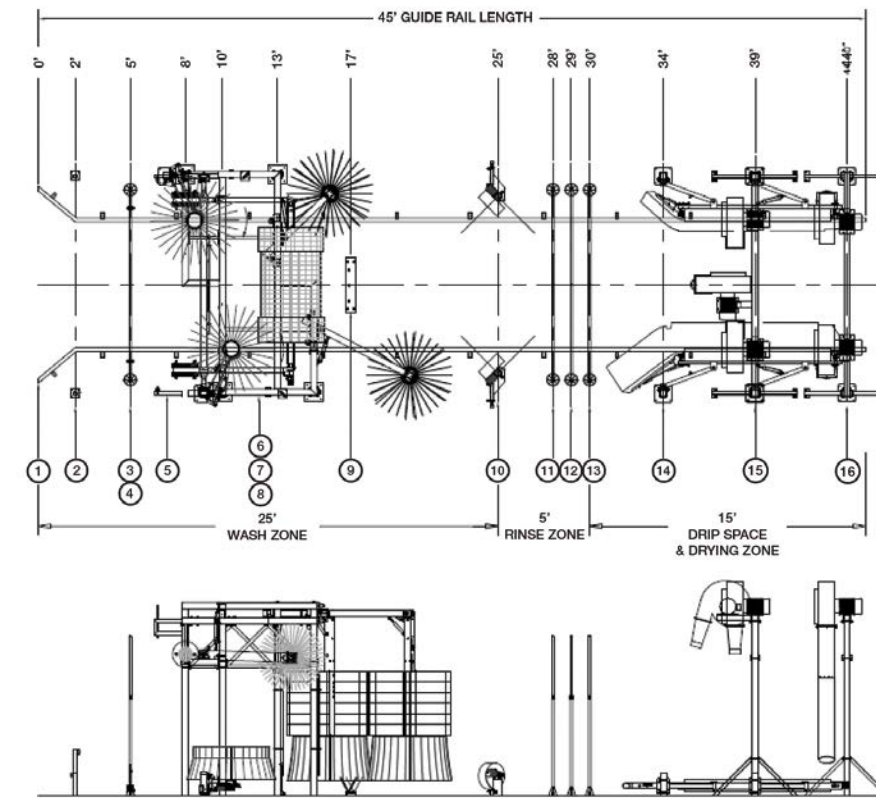
- 42 gpm fresh water
- 20 gpm reclaim water
- 15 gpc fresh water
- 7 gpc reclaim water
- 5.2 SCFM Compressed Air
- 30 amps @ 230 V Required



Fleet Wash 45'

The 45' Fleet Wash System

provides a space conscious wash with tremendous cleaning and drying performance. This system includes the powerful top brush and flex wraps to clean off stuck on dirt while being gentle on the vehicle. The Hubcap Rocker Panels, Undercarriage, and Wheel Washer help target the rocker panel and wheels area. This system also features a wax arch and tire shine to help make the vehicles shiny enticing customers to purchase. The tunnel completes the wash with two sets of dryers to produce a finished clean, dry, and shiny vehicle.



Tunnel Components:

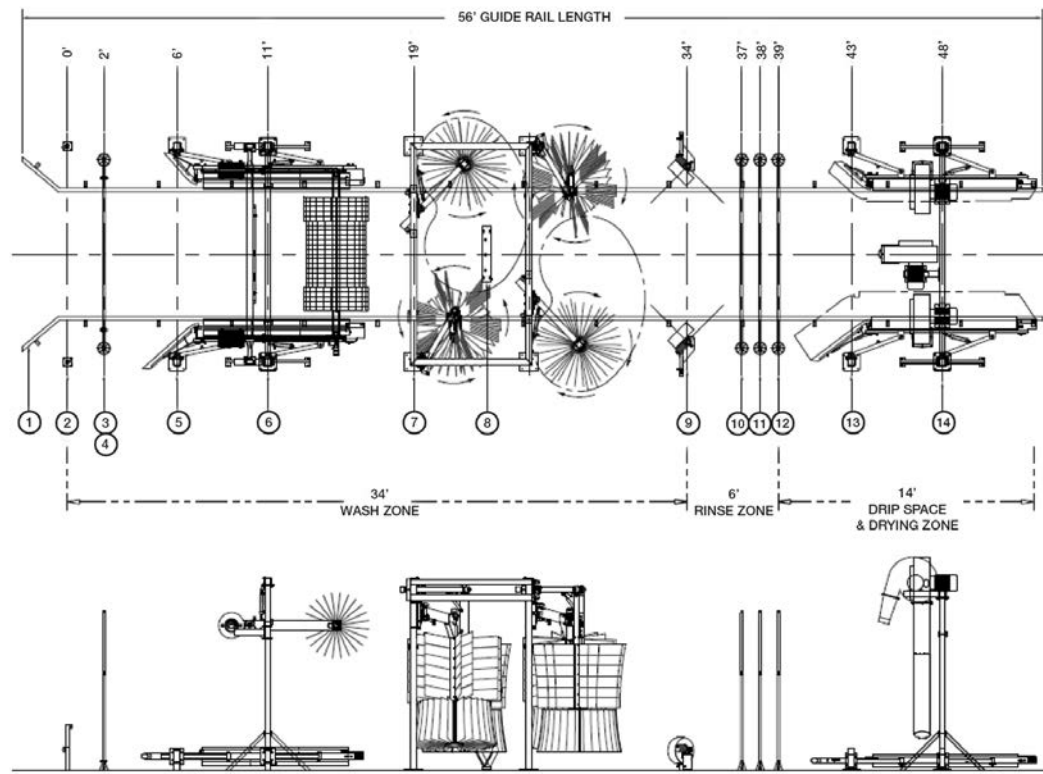
- | | |
|------------------------------------|---|
| 1. 45' Guide Rails | 11. Rinse Arch |
| 2. Entry Eyes | 12. Wax Arch |
| 3. Pre-soak Arch | 13. R.O. Arch |
| 4. CTA- Tire & Wheel Applicator | 14. Tire Glaze |
| 5. Pre-Soak Foam Application | 15. 3 - Motor Air Dryers |
| 6. Flex Wrap Around Washers | 16. 2 - Motor Air Dryers with Fin Nozzles |
| 7. Top Washer | |
| 8. Hubcap/ Rocker Panel Washer | |
| 9. Undercarriage | |
| 10. HP Wheel Washer & Side Blaster | |

Technical Specifications:

- 66 gpm fresh water
- 65 gpm reclaim water
- 24 gpc fresh water
- 23 gpc reclaim water
- 5.4 SCFM Compressed Air
- 263 amps @ 23 V Required

Fleet Wash 56'

The **56' Fleet Wash System** provides a space conscious wash with tremendous cleaning and drying performance. This system includes the powerful top brush and flex wraps to clean off stuck on dirt while being gentle on the vehicle. The **Hubcap Rocker Panels, Undercarriage, and Wheel Washer** help target the rocker panel and wheels area. This system also features a **wax arch and tire shine** to help make the vehicles shiny enticing customers to purchase. **Spot-Free Rinse** helps the vehicle be spot-free while waiting on the lot to be purchased. The tunnel completes the wash with two sets of dryers to produce a finished clean, dry, and shiny vehicle.



Tunnel Components:

1. 56' Guide Rails
2. Entry Eyes
3. Pre-Soak Arch
4. Tire & Wheel Applicator
5. Top Washer
6. Tire Brush
7. Flex Wraps & Side Washers
8. Undercarriage Applicator
9. HP Wheel Washer & Side Blast
10. Rinse Arch
11. Wax Arch
12. Spot Free Arch
13. Tire Glaze
14. 3 - Air Dryers with Fin Nozzle

Technical Specifications:

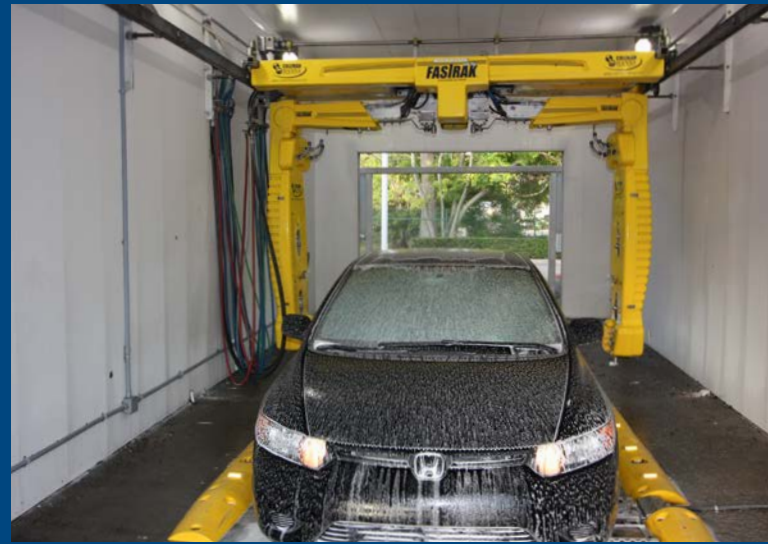
- 66 gpm fresh water
- 65 gpm reclaim water
- 24 gpc fresh water
- 23 gpc reclaim water
- 5.4 SCFM Compressed Air
- 207 amps @ 230 V Required

In Bay Automatics



Coleman Hanna manufactures a wide variety of in bay automatics, giving operators the choice between touch-free, soft touch, or combination systems. These high quality and easy to use systems provide auto dealers with dependable cleaning power. The **Water Wizard FasTrak™** has a faster wash time than other in bay automatics making it a perfect choice for auto dealers. The **FusionX** and **eFusion** provide the ultimate cleaning power comparable to much longer tunnel systems. Depend on the expertise of Coleman Hanna for the best solution for your lot!

Water Wizard FasTrak™



Coleman Hanna took the Water Wizard and put it on the FASTRAK! By combining existing and new ideas, this design created this revolutionary touchfree in bay automatic.

The **FasTrak™** features two wash arms on an overhead bridge that provides an open and inviting bay welcoming the customer. The openness provides an unobstructed entry making the customer more comfortable and bringing them back to wash again.

The wash time is significantly decreased when compared to other in bay automatics satisfying customers with consistent cleaning results and saving valuable time. Customers expect a clean, dry, and shiny car at a fair cost and in a reasonable time frame.

The **FasTrak™** is in direct response to the consumers demand for quality and speed in an aesthetically pleasant environment. Increased wash volume and less operating costs means happy customers and owners with more profit.

The **FasTrak™** provides reliable operation, consistent results and increased uptime. The unit has been engineered for **durability, reliability and low cost of ownership**. Decrease driver run off from long line and wait time and provide a clean vehicle that will keep customers coming back for more!

Advantages

- Dual Arm
- Speed
- Ease of Maintenance
- Reliable
- Consistent Results
- Open Bay

Water Wizard 2.0™

Over 30 years of experience developing better performing car wash equipment has gone into the **Water Wizard™ 2.0** Touch-free Automatic car wash system. The unit is dependable and easy to maintain with built in features that save on operating costs. It's cleaning features include an independent presoak system, onboard rocker panel blasters, oscillating high pressure nozzles, and a boom that contours the vehicle in the front and back.

Every **Water Wizard 2.0** touchfree automatic is loaded with standard features. It includes most of the customer requested features and then some added bonuses. Every unit is equipped with Undercarriage and Rocker Panel Sprayers. The undercarriage blast provides a high pressure wash under the vehicle. It can be on or off during any wash cycle. The On Board Rocker Panel Sprayers thoroughly clean the wheels, tires, and lower part of the vehicle with controlled efficiency. **Water Wizard 2.0** Wash Boom is specially designed with high impact, zero degree oscillating nozzles that rotate and attack the dirt on the front and rear of the vehicle. An additional "Bug Pass" can be programmed, front and rear, to provide extra cleaning when required.

Customers are sure to be impressed with the clean vehicles on your lot thanks to the tremendous touch-free cleaning power of the Water Wizard 2.0.



FusionX™

eFusion™

The **FusionX™** is a combination wash system that allows choice between touch-free and soft touch washes. It combines the unmatched cleaning ability of the *Water Wizard™ 2.0* Touch Free System with the eFusion three soft touch brush system featuring Sparkle Soft wash materials.

Every unit is equipped with Undercarriage, Rocker Panel Sprayers, Entrance Signs, Web Enabled Computer Monitoring and all Stainless Steel construction.

The SparkleSoft soft touch components of the **FusionX™** has 3 brushes: 2 side brushes and one top brush. The two side brushes provide complete coverage of the vehicle by counter-crossing over the center of the vehicle. Each brush uses an amp sensing technique to stay in constant contact with the vehicle and with just the right amount of cleaning pressure to ensure a clean vehicle.

The **FusionX™** has scrubbing action oscillating nozzles which cover the entire vehicle. The boom drops below the bumper level in the front and rear for maximum cleaning and offers optional passes. The height adjustment system allows the boom to drop to 18" to maximize the scrubbing action of the high pressure wash. This ensures that every size vehicle receives the same quality wash!

This high quality unit with low maintenance makes an excellent choice for any auto dealer!

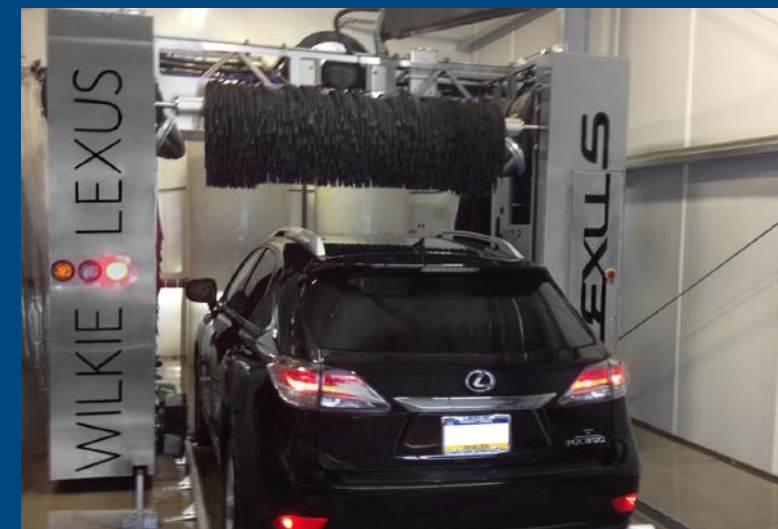
The **eFusion™** is the ultimate soft touch wash system. It is designed to effectively clean a vehicle using our unique SparkleSoft wash material. The **eFusion™** is programmable to fit your wash needs.

Every unit is equipped with 3 SparkleSoft brushes, Foaming Prewash, Entrance Signs, Web Enabled Computer Monitoring and all Stainless Steel construction.

The SparkleSoft soft touch component of the eFusion has three brushes. Two sides and one top brush. The operator has the option to have side brushes only, top brush only or a combination of both top and side brushes on any wash cycle. The top brush will rotate one direction and then change directions as it approaches the rear of the vehicle for maximum cleaning and less potential for damage. The system uses a Multi-Axis Coordinated Brush Motion Control to adjust the top and side brushes to the exact contour of every vehicle. Each brush uses an amp sensing technique to stay in constant contact with the vehicle and with just the right amount of cleaning pressure to ensure a clean vehicle.

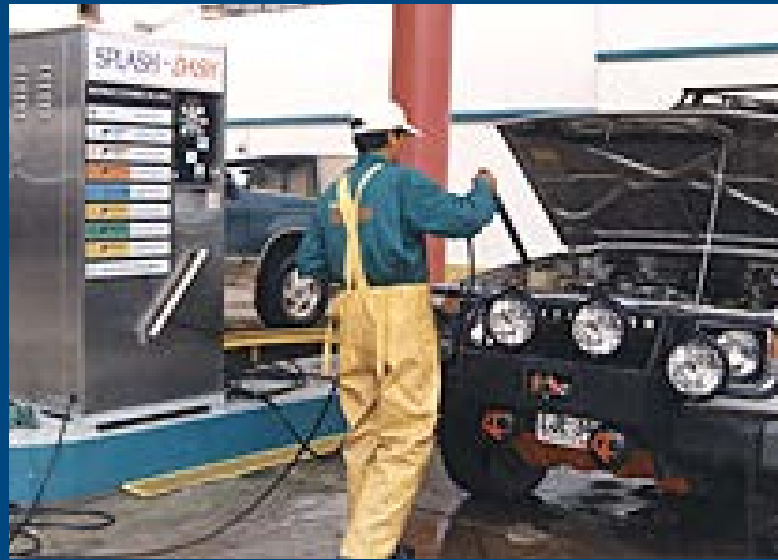
Counter rotating side brushes cross over the center line of every vehicle for complete coverage.

This robust unit provides tough cleaning power while still being gentle on the vehicle's surface!



Self Serve & Support Equipment

iShine Spot-Free Rinse™



To run high quality car wash equipment requires a robust and low maintenance support system. Coleman Hanna's **Sweetwater Reverse Osmosis System** will provide a spot-free finish to each vehicle. **Sweetwater Reclaim System** will help reduce the amount of fresh water used per wash while not compromising on wash quality. Coleman Hanna also offers self serve systems such as the **iShine** and **Splash N Dash** that work perfectly for auto dealers looking to quickly wash or rinse a vehicle. Our powerful vacuums help dealers keep the inside clean in addition to the outside of the vehicle.

The **iShine Rinse System™** provides a process to wash all the vehicles on the lot, keeping them clean, shiny, spot-free and ready to sell. This portable wash system delivers high pressure spot-free water that keeps the vehicles clean and in sales ready condition.

The **iShine Rinse System™** fits in a standard size truck bed or a trailer and comes with a gas powered motor and pump that delivers years of quality service with little maintenance. A separate water treatment system produces spot-free water and stores the clean spot-free rinse into a reservoir. A pump transfers the spot-free water into the portable storage tank. Once the tank is filled, an employee will simply

need to drive around spraying vehicles clean. The robust spot free system utilizes tried and tested technology that brings high quality performance with minimum processing time.

Reduce your labor costs by washing your inventory without having to drive them through a car wash. Spot-Free Rinse leaves vehicles looking clean with no water spots to boost selling.

Keep your inventory ready to sell with the iShine Rinse System™.

Clean cars sell!

Splash N Dash™



Splash-N-Dash is a single bay self-contained car wash. It offers a wide variety of features including low pressure tire cleaner/engine cleaner using a special cutting solution to remove oxidized tire film and strips away engine grease and grime. High Pressure Soap ensures thorough cleaning, a soft-bristled foaming brush scrubs away hardened road scum. High pressure crystal clear water for a clean rinse. Finally a High-Gloss Wax to preserve and protect the finish. The equipment arrives pre-wired and plumbed, is fully assembled and ready to install wherever electrical power and fresh water connections are available. The stainless steel cabinet ensures all weather performance in any climate providing corrosion resistant, maintenance free care.

Standard Features

- All Stainless Steel Cabinet
- Trigger Gun and Hoses-45 FT
- 3 HP - 3 PH Electric Motor
- Model CAT 5CP2120 Pump, 4.0 GPM/1000 PSI
- 34" W x 32" D x 70" H
- 220 Volts 50/60 Cycles
- Shipping Weight: 775 lbs.
- Coin/Token Security Box
- Countdown Timer
- Foam Brush

Options

- Freeze Prevention System and Insulated Cabinet
- Dual 180 Degree Top Mount Booms
- 360 Degree Overhead Boom
- Single Phase
- 180 degree Wall Mount Boom
- 3000 Watt Submersible Heater
- Presoak System
- Bill Acceptor
- Credit Card Reader



Vacuums



From left to right: Blast - N- Vac, 92000 Standard Vacuum, 94000 Round Vacuums, and 93000 Oval Vacuums.

Keep the inside of vehicles in optimum selling condition with Coleman Hanna's wide variety of powerful vacuums.

The **Blast-N-Vac** provides not only powerful suction but also blasts air to rid the vehicle of hard to reach dirt and water in dashboards, mirrors, door crevices, engine compartments, and wheels. The blast function also helps rid of dirt in floor mats, carpets, and air vents.

The **92000 Standard Vacuum** is an economical choice that doesn't compromise on quality. This dependable unit is a perfect choice for a simple and low maintenance vacuum.

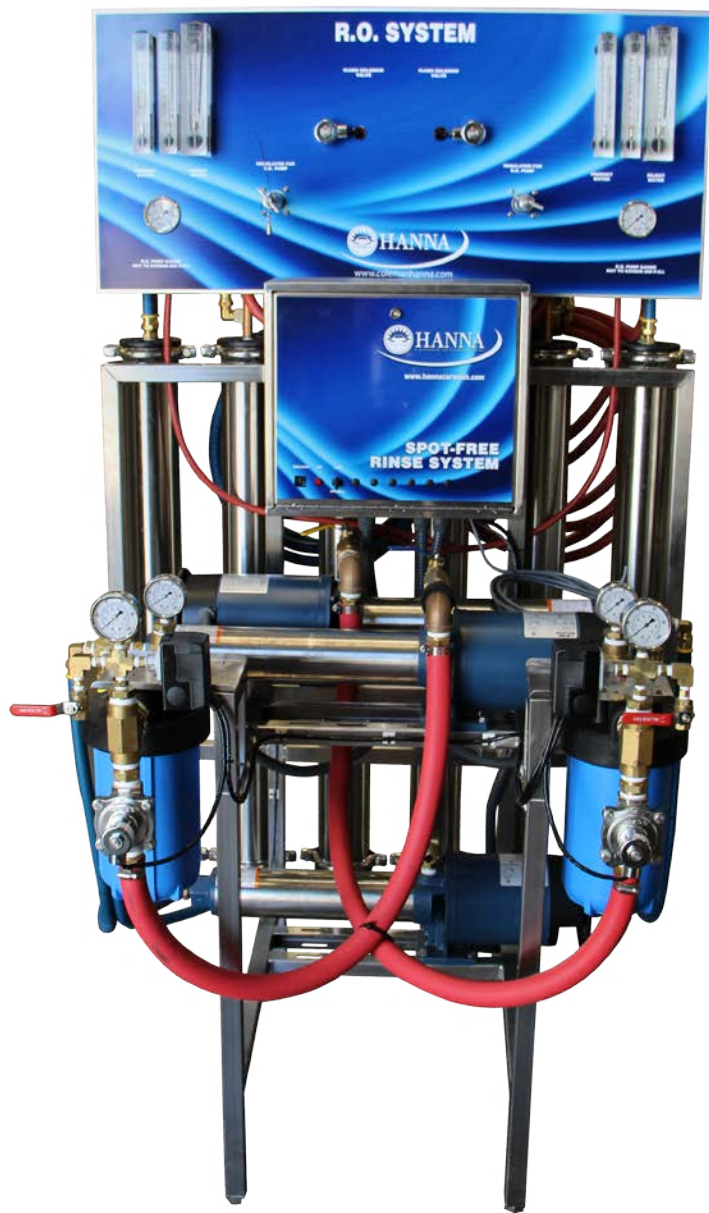
The **94000 and 93000 vacuums** offer a variety of combination units including fragrance or shampoo combined with a super vacuum. These systems are perfect for adding a pleasant smell such as flowers or new car smell to a

vehicle. Presenting a favorable smell in a vehicle might entice customers to purchase and feel pleasant in the vehicle.

Coleman Hanna also offers a central vacuum system that allows multiple hoses to operate off one central system. These systems work perfectly for auto dealers allowing all worker to vacuum with one central system to maintain.



Sweetwater Spot Free



By installing a **Sweetwater Spot-Free Rinse Reverse Osmosis Water Purification System** in your car wash, you can increase sales and customer satisfaction. Spot-Free Rinse System removes TDS (total dissolved solids) in the water that softeners do not remove. Dissolved solids in the water causes spotting on the

surface of automobiles. Normal water in the USA has an average of 300 ppm (parts per million) of dissolved solids. Objectionable spotting occurs in water with only 50 ppm or more. A Sparkle Spot-Free Rinse System removes 98% of TDS or usually to a level of 10 ppm or less. An RO (reverse osmosis) system consists of a charcoal filter, pump, membrane and storage tank. The charcoal filter filters the water and removes all chlorine to prevent damage to the membrane. The pump receives city water pressure and increases it to force it through the membrane. The membrane separates the good water from the bad, and then the purified water is stored in a storage tank. The tank stores the water until the customer uses the Spot-Free Rinse System.

Benefits

- **Engineering and Maintenance** - Engineered with the best available components on the market, the Sweetwater Spot-Free Rinse System will deliver low pressure pure water to the car wash bay. The Sparkle Spot-Free Rinse System can be installed "onboard" for newly purchased wash systems or separately for existing car washes. Installation can usually be done in a day, without downtime. Regular maintenance can be done by the operator simply by changing prefilters and checking water for purity.
- **More Customers, More Profits** - By offering RO with your car wash, you will not only gain satisfied customers, but you can also increase your bay income. RO can produce up to 12% of your bay income. This is the most cost effective product in a bay giving you a high rate of return on investment.

Sweetwater Reclaim

Finally a simple robust reclaim system that won't break the bank. Save up to 120 gallons per minute, with the dual element system, with 32 internal hydrocyclones to spin the dirt right out of your wash water. Clear Lexan bowls let you see the removed particulate. Graphic PLC monitors the system, providing water on demand and performs the self cleaning function. When not needed the VFD controlled high efficiency motor slows to recirculation mode. Optional ozone removes color and odor and the optional bio control gets rid of surfactants, keeping your storage tank water fresh. Slim design fits easily into most equipment rooms or wash bays.

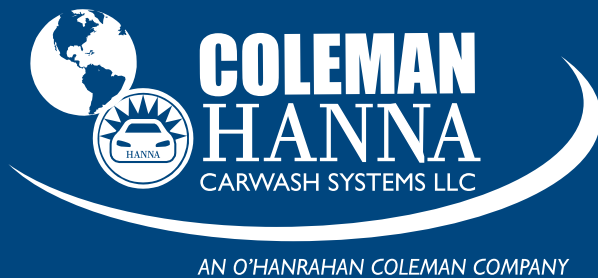
Options

- **Ozone** - is a corona discharge unit capable of removing color and odor, grease and oil from your reclaim tanks keeping your water fresh and ready to use. Ozone is 10 times stronger than chlorine and is made on-site with electricity.
- **Programmed Bio Pump With Munox Injector** - Stenner pre-programmed peristaltic pump provides accurate inoculation of the biological agent into your wash water that effectively eats grease and oil as well as soaps and wax. It helps remove odor and works very well in conjunction with the ozone system.
- **Stainless Steel Bay Filter** - Provides finer filtration to protect sensitive piston pumps and valves enabling you to use even more reclaim water in your wash.
- **Self-Cleaning Filter** - Stainless Steel filter and element provide maintenance free operation and absolute filtration. 25 micron rated provides superior protection and filtration. Self-cleaning process requires control power and compressed air for the valves and purge function.





For more information please contact Coleman Hanna or your local distributor.



5842 W 34th St, Houston, TX 77092
1.800.999.9878 • 1.713.683.9878
www.colemanhanna.com



Find us on Facebook:
[/ColemanHannaCarwash](https://www.facebook.com/ColemanHannaCarwash)

Your Local Distributor: